



# CAVAN TOWN AND ENVIRONS DEVELOPMENT PLAN 2008 - 2014

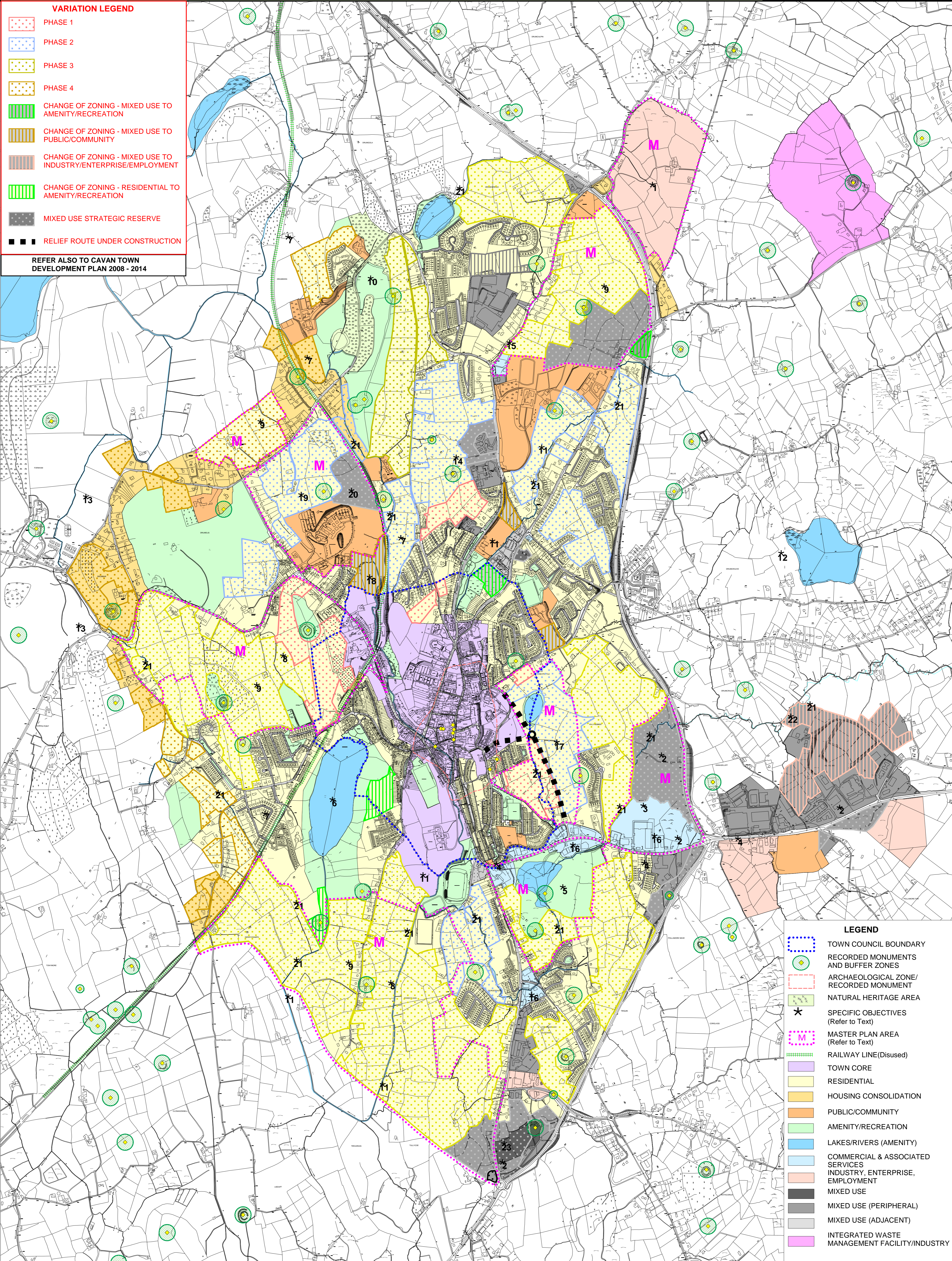
## VARIATION NO 1 PHASING MAP

Co. Manager	Mr. Jack Keyes
Director of Service	Mr. Ger Finn
A/Senior Planner	Ms. Marice Galligan
Mapping	Mr. Brian Allen
Date	July 2011
	Map Not to scale

**VARIATION LEGEND**

- PHASE 1
- PHASE 2
- PHASE 3
- PHASE 4
- CHANGE OF ZONING - MIXED USE TO AMENITY/RECREATION
- CHANGE OF ZONING - MIXED USE TO PUBLIC/COMMUNITY
- CHANGE OF ZONING - MIXED USE TO INDUSTRY/ENTERPRISE/EMPLOYMENT
- CHANGE OF ZONING - RESIDENTIAL TO AMENITY/RECREATION
- MIXED USE STRATEGIC RESERVE
- RELIEF ROUTE UNDER CONSTRUCTION

REFER ALSO TO CAVAN TOWN DEVELOPMENT PLAN 2008 - 2014



**LEGEND**

- TOWN COUNCIL BOUNDARY
- RECORDED MONUMENTS AND BUFFER ZONES
- ARCHAEOLOGICAL ZONE/RECORDED MONUMENT
- NATURAL HERITAGE AREA
- SPECIFIC OBJECTIVES (Refer to Text)
- MASTER PLAN AREA (Refer to Text)
- RAILWAY LINE (Disused)
- TOWN CORE
- RESIDENTIAL
- HOUSING CONSOLIDATION
- PUBLIC/COMMUNITY
- AMENITY/RECREATION
- LAKES/RIVERS (AMENITY)
- COMMERCIAL & ASSOCIATED SERVICES
- INDUSTRY, ENTERPRISE, EMPLOYMENT
- MIXED USE
- MIXED USE (PERIPHERAL)
- MIXED USE (ADJACENT)
- INTEGRATED WASTE MANAGEMENT FACILITY/INDUSTRY