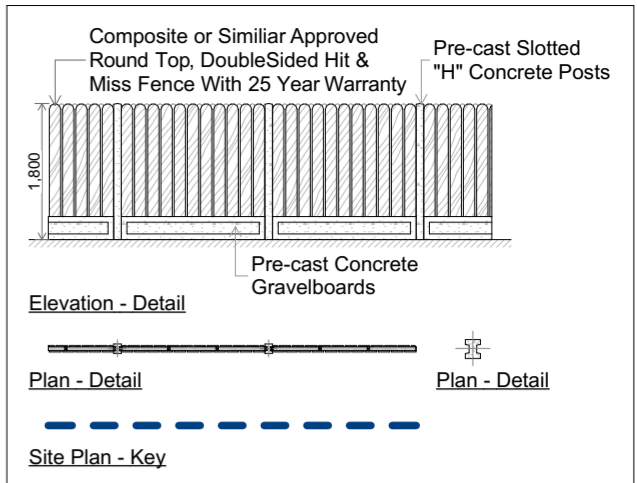


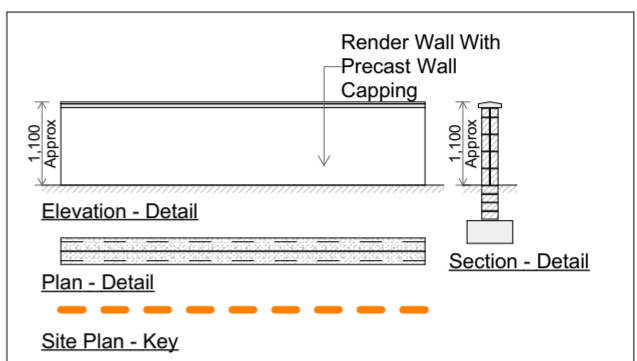


**Site Boundary**  
0.39ha / 0.96 acre

Private Open Space	
Unit No.	Area (m <sup>2</sup> )
1	50.9
2	43.7
3	45.2
4	58.7
5	125.5
6	53.4
7	54.0
8	99.6
9	51.4
10	45.7
11	42.2
12	27.4
13	54.3



2 Boundary Wall 'A' 1:100



3 Boundary Wall 'B' 1:100

- Access Road
- Driveways/ Parking Spaces
- Pedestrian Path Along Access Road
- Footpath
- Private Open Space (Lawn)
- Public Open Space
- Specimen Trees, Shrubs & Ground Cover Planting

- House Type 'A' - 4 No. Unit 2 Bed Semi-Detached Bungalows
- House Type 'B' - 9 No. Unit 2 Bed Semi-Detached / Detached Bungalows

**Total Unit: 13**

Location of Site Notice Marked  
Site Boundary TBC  
Sloped embankment with ground cover



REV	DATE	DESCRIPTION	APPROVED

**Wynne Gormley Architects & Surveyors Ltd.**  
© WGG ARCHITECTS & SURVEYORS LTD  
COPYRIGHT RESERVED

**JOB DETAILS**  
Housing Development at Kinnypottle,  
Cavan Town, Co. Cavan for Cavan  
County Council

Scale @ A2 1:250, 1:100, 1:1	Dwg.no PL 20-040-001	Amend. 
Date 06/01/2021	Description Planning - Site Layout & Boundary Details	
Drawn by John McDermott		
Checked by Enda Gilsenan		

21, Church View, Cavan  
T +353 49 43 61096  
F +353 49 43 62907  
E info@wggarchitects.ie  
W www.wggarchitects.ie



1 Site Layout 1:250