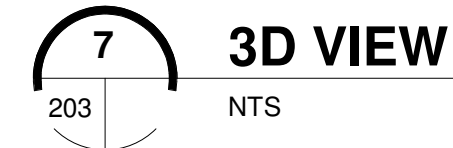


- CE

- ① 20mm o/w wet dash sand and cement render with 10mm chips, painted with a selected silica-based masonry paint system.
- ② 102mm thick selected clay brickwork with weather struff pointing and set in stretcher bond.
- ③ Flat concrete interlocking tiles with thin leading edge in selected colour.
- ④ PPC aluminium/PPC aluminium clad windows and doors.
- ⑤ Proprietary uPVC system rainwater pipes, fascias and soffits.
- ⑥ Rooflight.
- ⑦ Galvanised steel balcony.



Room Schedule 3 BED/5P - TYPE D		
Name	Min. Area Required	Area Achieved
3 BED/5P - TYPE D		
BEDROOM 01	13.0 m <sup>2</sup>	13.00 m <sup>2</sup>
BEDROOM 02	11.4 m <sup>2</sup>	11.81 m <sup>2</sup>
BEDROOM 03	7.1 m <sup>2</sup>	7.11 m <sup>2</sup>
Bedroom Aggregate	32.0m <sup>2</sup>	31.93 m <sup>2</sup>
HALL		8.79 m <sup>2</sup>
LANDING		8.42 m <sup>2</sup>
Circulation Aggregate	N/A	17.21 m <sup>2</sup>
KITCHEN/DINING ROOM		19.30 m <sup>2</sup>
LIVING ROOM	13.0 m <sup>2</sup>	14.80 m <sup>2</sup>
Living Aggregate	34.0m <sup>2</sup>	34.09 m <sup>2</sup>
BATHROOM		4.05 m <sup>2</sup>
SHOWER ROOM		3.24 m <sup>2</sup>
Sanitary Aggregate	N/A	7.29 m <sup>2</sup>
H.P./ STORE		1.65 m <sup>2</sup>
STORE		3.06 m <sup>2</sup>
STORE		0.88 m <sup>2</sup>
Storage (internal)	5.0m <sup>2</sup>	5.60 m <sup>2</sup>
3 BED/5P - TYPE D	92.0m <sup>2</sup>	<b>101.48m<sup>2</sup></b>



B	Issued for Part VIII submission	MW	05/08/22
A	Pre submission issue.	MW	20/07/22
Rev.	Description	Bv.	Date



Drawing Status		Drawn By MGW	
<b>FOR PART VIII SUBMISSION</b>			
Client CAVAN COUNTY COUNCIL		Check By FD	
Project 45no. SOCIAL HOUSING UNITS AT PAIRC NA TEILE BECKSCOURT, BAILIEBOROUGH, CO. CAVAN		Scale As indicated@A1	
Title Type D - 2 Storey 3 Bed House		Date MAY 2022	
Job No. <b>21S12</b>	Stage <b>ST2</b>	Drawing No. <b>203</b>	Rev <b>B</b>