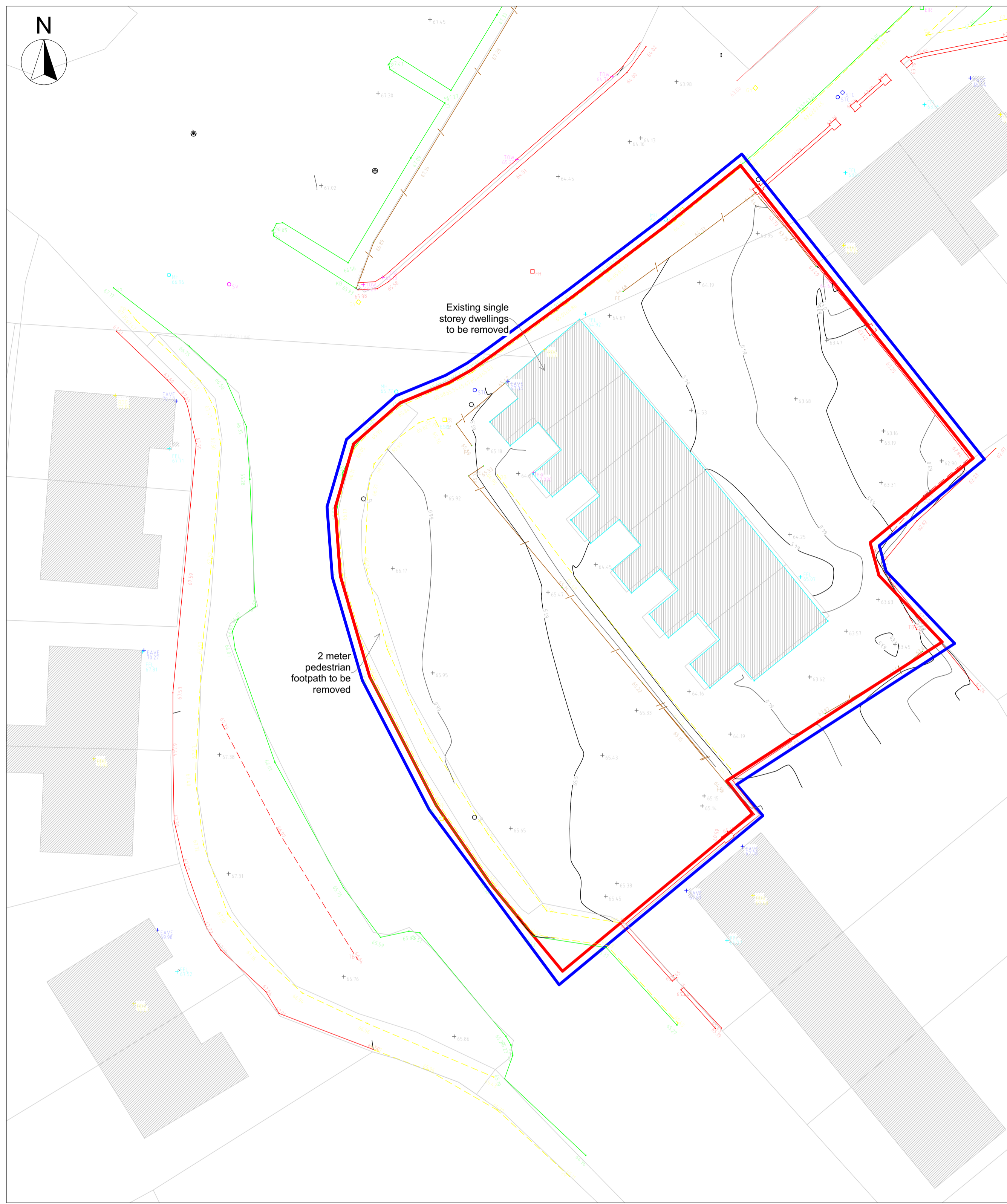
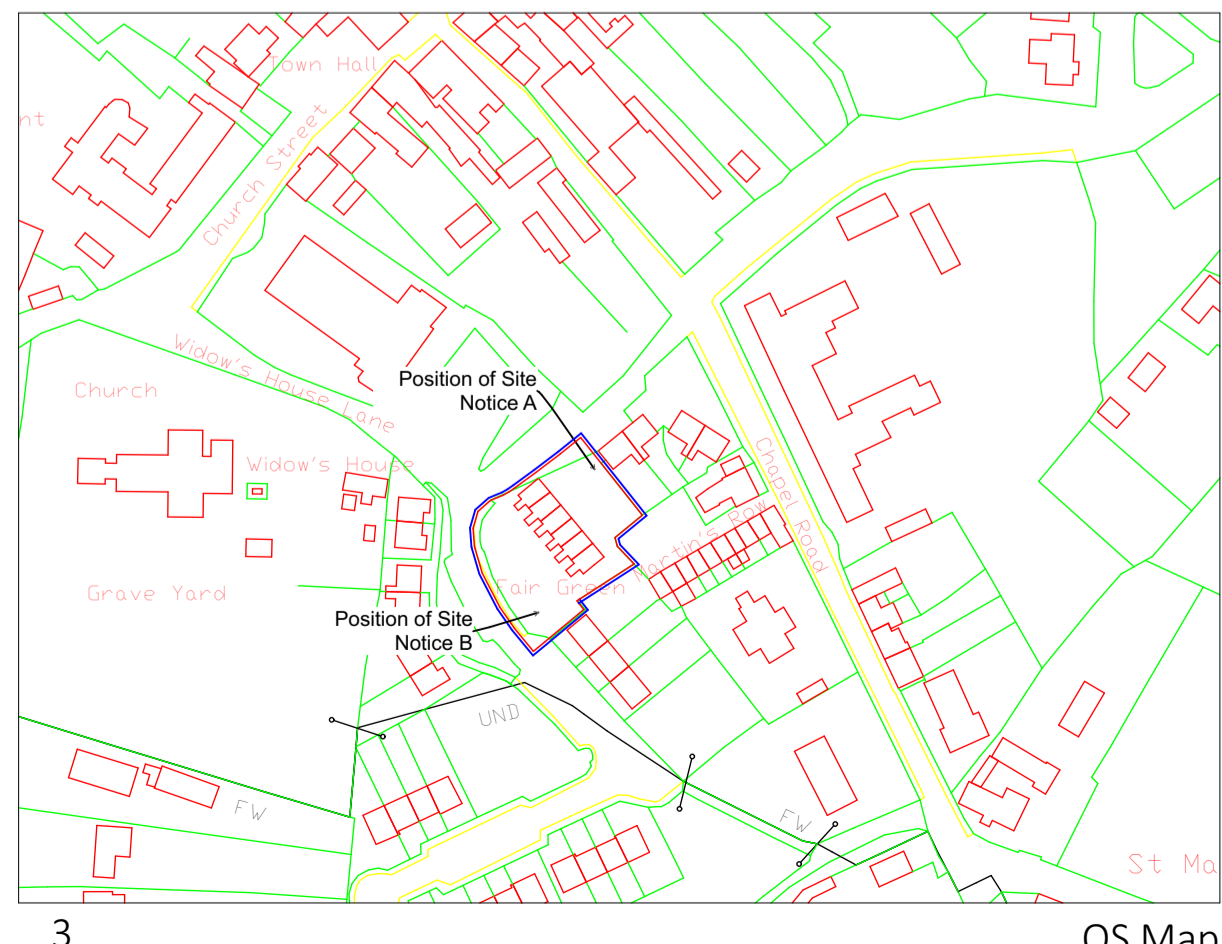


Site Layout Plan 1:200



Site Layout Topo 1:200



OS Map 1:2000

Site: Scale: 1:500
 Total Landholdings
 Site Boundary Area: 0.25 Hectares / 1.017 Acres
 X,Y Coordinates 636338,816813 OSI Licence No.: AR 0031622

Density of Site: 1.017/9 units = 0.11 Density

LEGEND

- Boundary - Site area
- Neighbouring Dwelling
- House Type 'A'
- House Type 'B'
- House Type 'C'
- Bin / Bike Store
- Proposed Pedestrian Path
- Proposed Green area
- Private Green Space
- Public Road
- Parking Spaces
- Public Pedestrian Path Along Public Road
- Footpath

House Type 'A'
 1 No. Single Storey Dwelling IWA
 (4 Person - 83.6 m²)

House Type 'B'
 5 No. 2 Bed Terraced
 Two Storey Dwelling (4 Person)
 (Each House - 87.8 m²)

House Type 'C'
 3 No. 1 Bed Apartment
 Three Storey Dwelling
 (2 Person per apt.)
 No. 6 - 49.5 m²
 No. 7 - 49.5 m²
 No. 8 - 49.5 m²

Total 9 Units

House Types

- House Type 'A'
 1 No. Single Storey Dwelling IWA
 (4 Person - 83.6 m²)
- House Type 'B'
 5 No. 2 Bed Terraced
 Two Storey Dwelling
 (4 Person)
 (Each House - 87.8 m²)
- House Type 'C'
 3 No. 1 Bed Apartment
 Three Storey Dwelling
 (2 Person per apt.)
 No. 6 - 49.5 m²
 No. 7 - 49.5 m²
 No. 8 - 49.5 m²

Total Units: 9



Rev	Issue Date	Description	Approved by
Purpose of Issue			
PART 8 PLANNING SUBMISSION			
Wynne Gormley Gilson Architects & Surveyors Ltd.			
© WGG ARCHITECTS & SURVEYORS LTD COPYRIGHT RESERVED			
JOB DETAILS			
Proposed Housing @ Widow's Lane, Corporation Land, Belturbet, Co. Cavan for Cavan County Council			
Scale of A1	Drawn as	Amend.	
1:200, 1:2000, 1:250, 1:291.32	PL21-124-101		
Date	Description		
18/10/2022	Proposed Site Layout, Site Topo Survey & Site Location Map		
Drawn by			
J Mrowiec			
Checked by			
P Wynne			
21, Church View, Cavan T +353 49 43 61096 F +353 49 43 62907 E info@wggarchitects.ie W www.wggarchitects.ie			