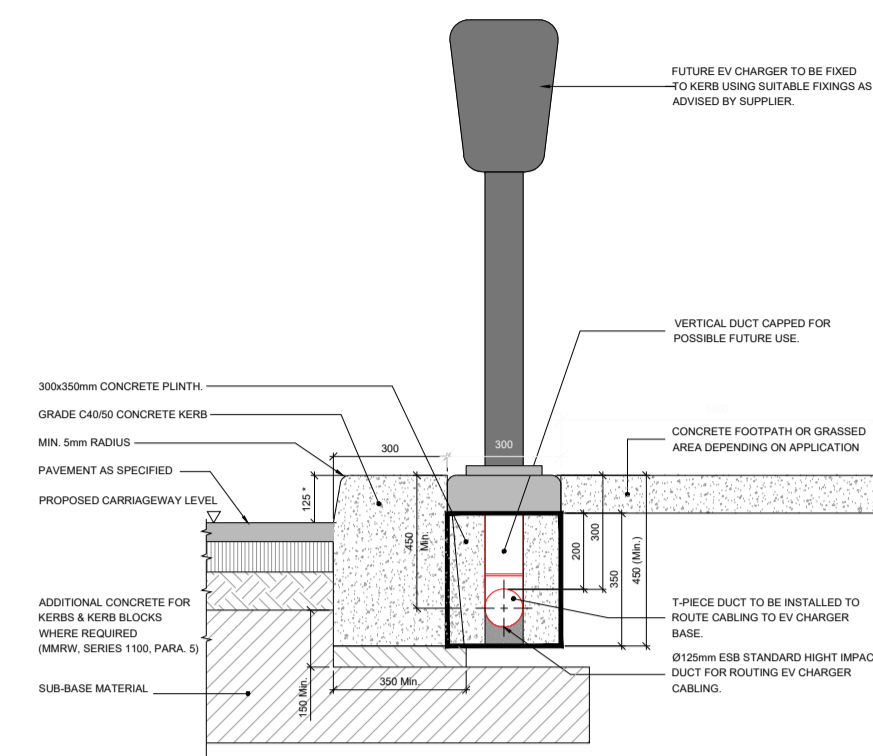


CAMPERVAN SERVICE UNIT

CAMPER VAN SERVICE UNIT C/W 16A SPN ELECTRICAL CONNECTION, WATER INTAKE, GRAY WATER DRAINAGE & SOILS AND WASTE DISPOSAL

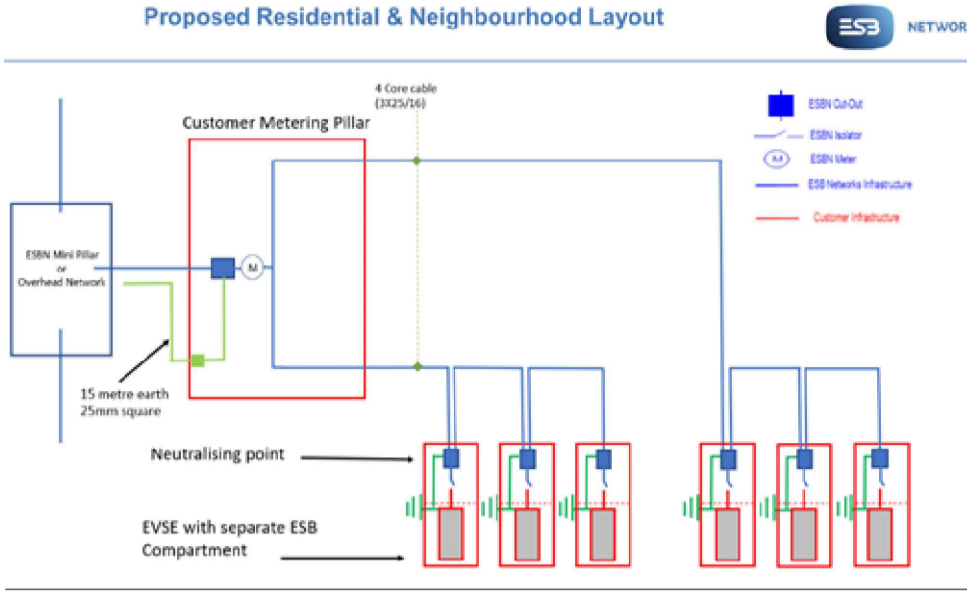


EV CHARGING POINT DUCTING DETAIL



NOT TO SCALE

ESB DETAIL A - PROPOSED RESIDENTIAL DUCTING LAYOUT



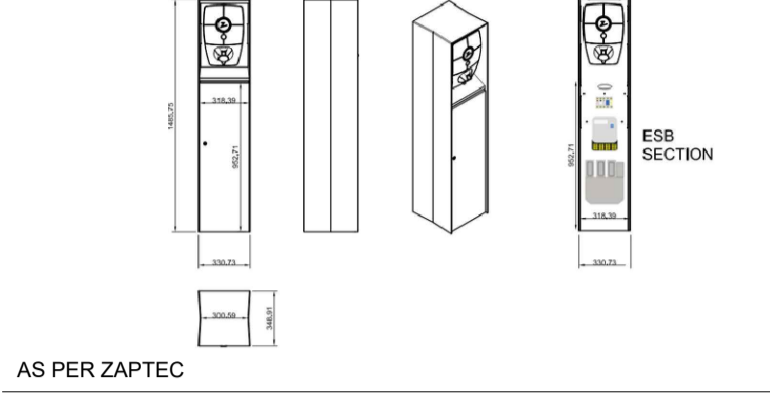
ZAPTEC PRO COLUMN MOUNTED CHARGING UNIT

ZAPTEC PRO EV CHARGERS POLE MOUNTED.



AS PER ZAPTEC

ZAPTEC PRO CHARGING UNIT C/W CUT-OUT



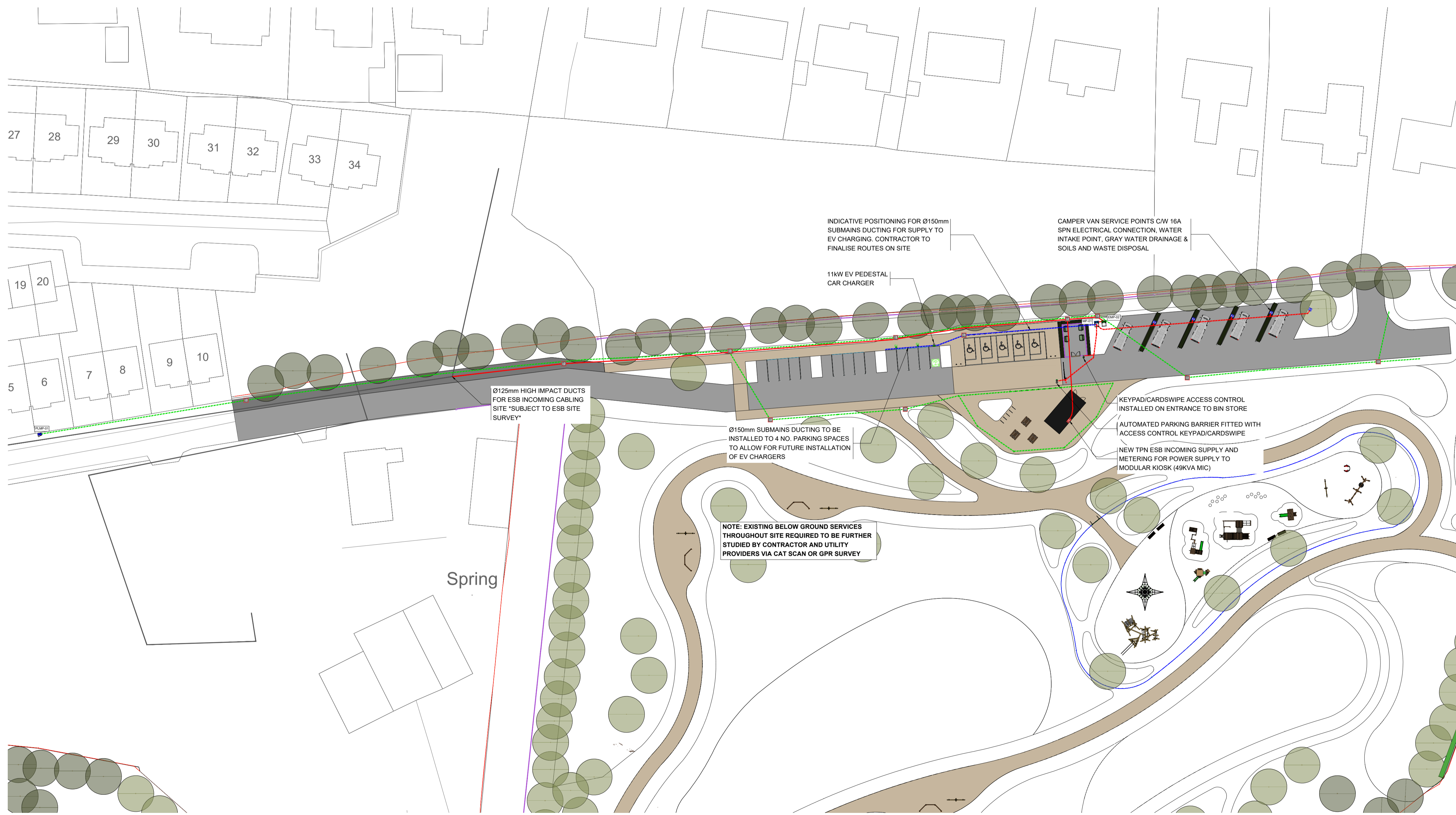
AS PER ZAPTEC

SITE SERVICES NOTES

- 1.00 THIS DRAWING IS REPRESENTATIVE OF PROPOSED NEW SITE SERVICES ONLY.
- 2.00 THIS DRAWING DOES NOT INDICATE EXISTING SERVICES WHICH MAY BE PRESENT.
- 3.00 THE CONTRACTOR SHALL ENSURE BEFORE COMMENCEMENT OF WORKS THAT HE IS SATISFIED AS TO THE LOCATION OF ALL EXISTING SERVICES TO ENSURE NO DAMAGE CAN OCCUR.
- 4.00 PVC DUCTS SHALL BE HIGH IMPACT RESISTANT. THIN WALL PVC DUCTS DO NOT COMPLY. DUCTS MUST NOT HAVE BREAKS OR GAPS.
- 5.00 DUE CARE AND ATTENTION IS TO BE TAKEN WHEN DIGGING IN THE VICINITY OF TREES. HAND DIGGING IS REQUIRED AS NOT TO DAMAGE TREE ROOTS.
- 6.00 ALL INCOMING SERVICES SHALL BE INSTALLED BACK FILLED IN ACCORDANCE WITH STATUTORY BODY UTILITY COMPANY GUIDELINES IN TERMS OF DEPTH, SEGREGATION etc.
- 7.00 THE MAIN CONTRACTOR SHALL BE RESPONSIBLE FOR COORDINATING ALL SITE SERVICES WITH STRUCTURAL FOUNDATION REQUIREMENTS SITE CONDITIONS etc.
- 8.00 THE MAIN CONTRACTOR SHALL ENSURE THAT THE IN-GROUND DUCTS ARE CONTINUOUS ALONG THE ENTIRE LENGTH THE INTERNAL CAPACITY IS FREE FROM OBSTRUCTIONS etc.
- 9.00 THE MAIN CONTRACTOR SHALL DEMONSTRATE THE INTEGRITY OF ALL IN-GROUND DUCTS WITH BRUSH TESTING FULL CCTV INSPECTION SURVEY OF ALL INSTALLED SERVICES.
- 10.00 ALL IN-GROUND DUCT POP-UPS SHALL BE SECURELY CAPPED OFF DURING & AFTER CONSTRUCTION.
- 11.00 POSITIONS OF DRAINAGE ARE INDICATIVE ONLY, THIS DRAWING IS TO BE READ IN CONJUNCTION WITH ALL CIVIL ENGINEERS DRAWINGS SPECIFICATIONS.
- 12.00 ALL ESB DUCTS TO BE ONLY ESB APPROVED RED ELECTRIC CABLE DUCTS AND ARE TO BE C/W A STRONG CONTINUOUS 10mm POLYPROPYLENE DRAW ROPE FREE OF KNOTS AND SECURELY ANCHORED AT EACH END OF DUCT.
- 13.00 THE MAIN CONTRACTOR SHALL INSTALL ALL DUCTS SO AS TO ENSURE THE REQUIRED MINIMUM CLEARANCE OF 300mm FROM ALL OTHER SERVICES IS MAINTAINED.
- 14.00 THE MAIN CONTRACTOR SHALL INSTALL A CABLE WARNING TAPE 300mm BELOW GROUND LEVEL ALONG THE FULL LENGTH OF ALL ELECTRICAL ESB DUCTS.
- 15.00 ALL MANHOLE COVERS TO BE HEAVY DUTY & SUITABLE FOR IN-FILL WITH SURFACE TREATMENT TO LANDSCAPE ARCHITECTS DETAIL.
- 16.00 ALL ESB & DCC DUCTS TO BE HIGH IMPACT TYPE.
- 17.00 EXTERNAL FOULWATER, STORMWATER & WATER SERVICES TO PUBLIC BY OTHERS
- 18.00 MECHANICAL CONTRACTOR SHALL SUPPLY AND INSTALL NON POTABLE WATER SUPPLY UP TO IRRIGATION WATER POINT. LANDSCAPE CONTRACTOR TO CONTINUE WITH INSTALLATION AFTER WATER POINT

SITE SERVICES REFERENCE KEY

- TYPE 'A' MANHOLE
600(L) x 600(W) x 600mm(D)
- TYPE 'B' MANHOLE
1000(L) x 1000(W) x 1000mm(D)
- TYPE 'C' MANHOLE
1500(L) x 1500(W) x 1000mm(D)
- Ø150mm HIGH IMPACT DUCTS FOR PUBLIC SITE LIGHTING CABLING
- Ø150mm HIGH IMPACT DUCTS FOR ESB INCOMING LV 400V CABLING
- Ø110mm HIGH IMPACT DUCTS FOR LV POWER CABLING
- Ø110mm HIGH IMPACT DUCTS FOR EV CHARGING POWER CABLING
- EXISTING ESB MVLV UNDERGROUND CABLING
- MAINS WATER PIPEWORK
- FUTURE EV CHARGER INSTALLATION LOCATION
- EXTERNAL POLE MOUNTED 11kW EV CHARGER
- PARKING SPACE TO BE PROVIDED WITH EV CHARGING FACILITY
- ESB MINI-PILLAR
- EV & SITE SERVICES METERING PILLAR
- EXISTING PUBLIC LIGHTING MINI PILLAR
- FUSED SPUR POWER SUPPLY
- CAMPER VAN SERVICE UNIT 1700(H) x 600(W) x 600mm(D)
- INCOMING ESB SUPPLY AND METERING
- KEYPAD/SWIPE ACCESS CONTROL



STATUS	DATE	DESCRIPTION	DRN	ENG	APP

STATUS	DATE	DESCRIPTION	DRN	ENG	APP
S1	27.11.2025	PLANNING STAGE ISSUE	ACa	AC	SS